

Helping your children choose books they will love



Lovereading4kids.co.uk is a book website created for parents and children to make choosing books easy and fun

Opening extract from  
**How to Draw Scotland**

Written by  
**Mark Bergin**

Published by  
**Book House an imprint of Salariya  
Book Company Ltd**

All Text is Copyright © of the Author and/or Illustrator

Please print off and read at your leisure.



# SALARIYA

© The Salariya Book Company Ltd MMXIV  
All rights reserved. No part of this book may be reproduced, stored in a retrieval system or transmitted in any form or by any means, electronic, mechanical, photocopying, recording or otherwise, without the written permission of the copyright owner.

Published in Great Britain in MMXIV by  
Book House, an imprint of  
**The Salariya Book Company Ltd**  
25 Marlborough Place, Brighton BN1 1UB

1 3 5 7 9 8 6 4 2

*Author:* **Mark Bergin** was born in Hastings in 1961. He studied at Eastbourne College of Art and has specialised in historical reconstructions as well as aviation and maritime subjects since 1983. He lives in Bexhill-on-Sea with his wife and three children.

*Editor:* Stephen Haynes

PB ISBN: 978-1-909645-18-9

A CIP catalogue record for this book is available from the British Library.

Printed and bound in China.  
Printed on paper from sustainable sources.

**WARNING: Fixatives should be used only under adult supervision.**

Visit our websites to read interactive **free** web books, stay up to date with new releases, catch up with us on the Book House Blog, view our electronic catalogue and more!

[www.salariya.com](http://www.salariya.com)

Free electronic versions of four of our You Wouldn't Want to Be titles

[www.book-house.co.uk](http://www.book-house.co.uk)

Online catalogue  
Information books  
and graphic novels

[www.scribobooks.com](http://www.scribobooks.com)

Fiction books

[www.scribblersbooks.com](http://www.scribblersbooks.com)

Books for babies, toddlers and preschool children

[www.flickr.com/photos/salariyabookhouse](http://www.flickr.com/photos/salariyabookhouse)

View our photostream with sneak previews of forthcoming titles

Join the conversation on Facebook and Twitter by visiting

[www.salariya.com](http://www.salariya.com)



Visit  
[www.salariya.com](http://www.salariya.com)  
for our online catalogue and  
free interactive web books.

# Contents

- 4 Making a start
- 6 Style and medium
- 8 Perspective
- 10 Using photographs
- 12 Holyrood Palace
- 14 Wallace Monument
- 16 Crown and sceptre
- 18 Highland piper
- 20 Highland dancer
- 22 Balmoral Castle
- 24 Eilean Donan
- 26 Ben Nevis
- 27 Loch Ness
- 28 Edinburgh Castle
- 30 V&A at Dundee
- 31 Scottish Parliament
- 32 Glossary and Index



For free step-by-step tutorials by Mark Bergin, visit our YouTube channel at:  
[www.youtube.com/user/theSalariya](http://www.youtube.com/user/theSalariya)

# Balmoral Castle

**B**almoral Castle in Aberdeenshire has been a private royal residence since it was built in 1856. The architect was William Smith, but Queen Victoria's husband, Prince Albert, also had a hand in the design.

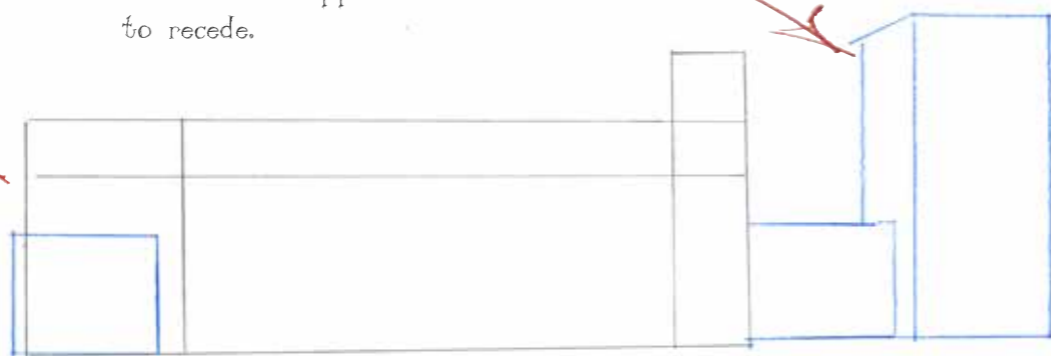


Begin with a rectangular skeleton for the building.



Don't forget the shorter tower on the other side.

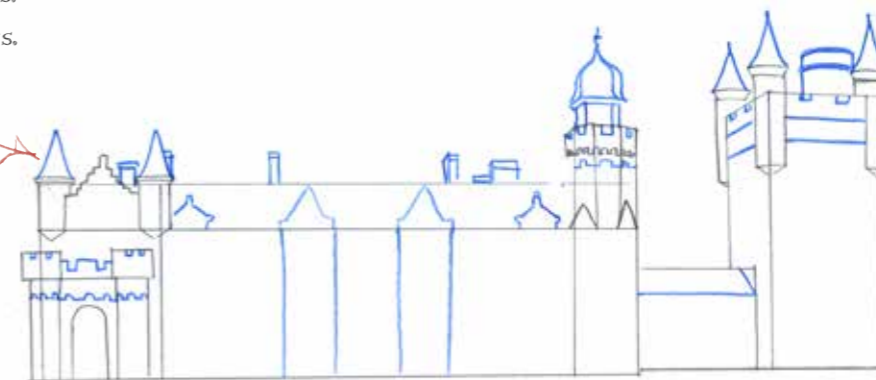
Add the main tower. Perspective will make the side wall appear to recede.



Add in the smaller turrets and crenellations to the towers.



Draw in the peaked roofs and additional crenellations on the tops of the towers. Add in the chimneys.



Add the windows and final details such as the flagpole.



Finish the drawing by shading the building and adding some foliage in the background.

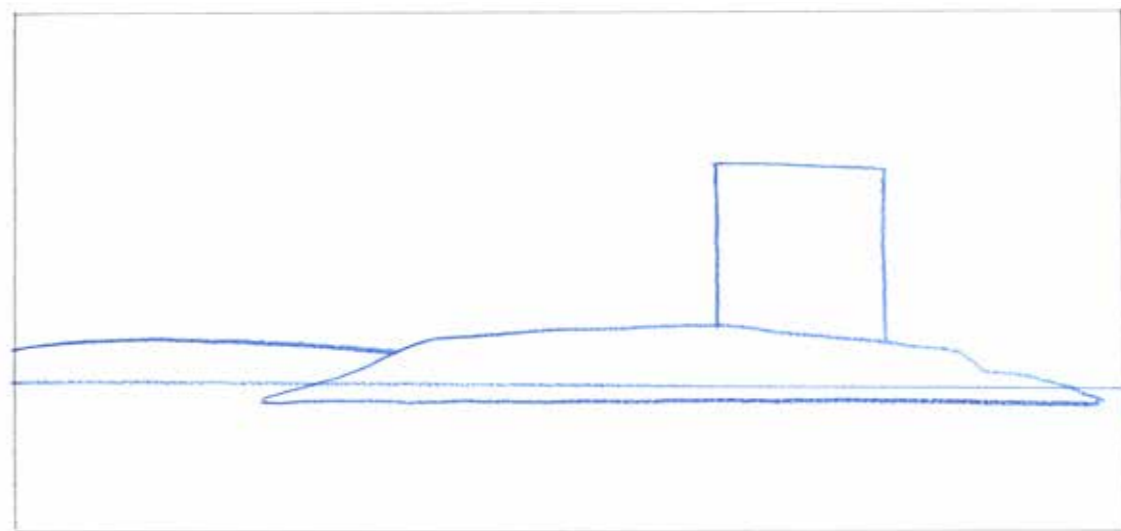


# Eilean Donan

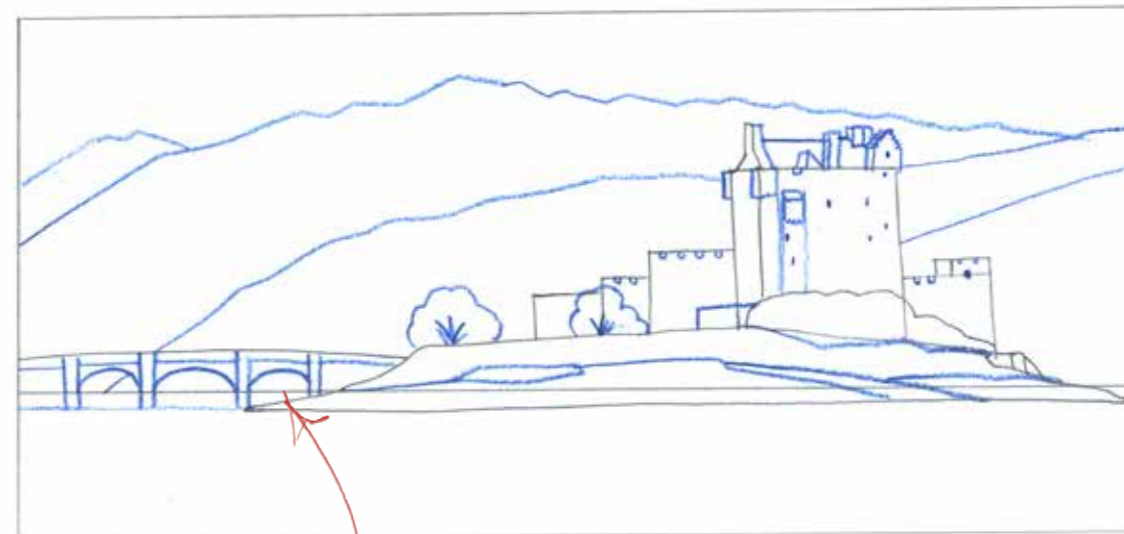
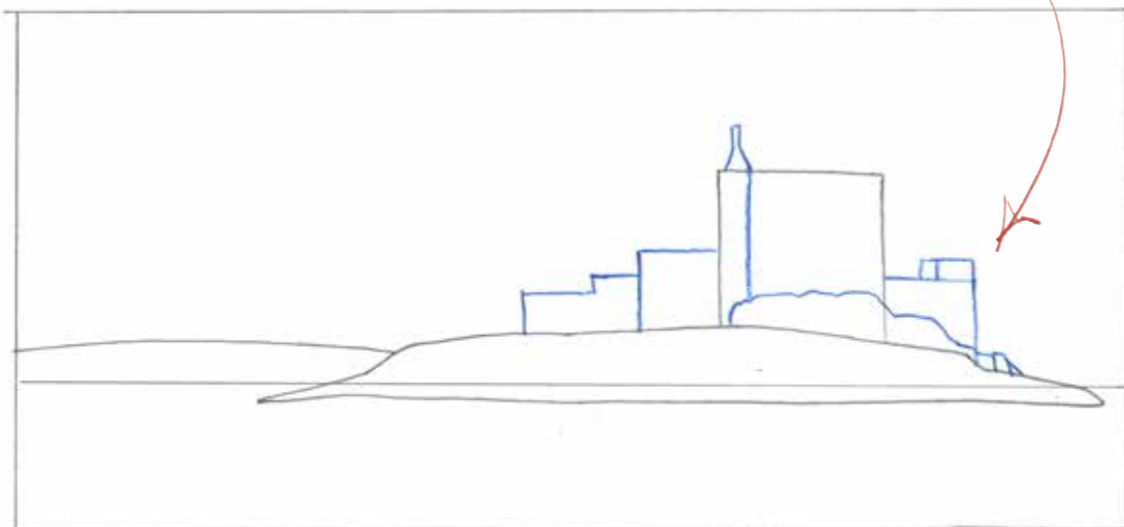


**E**ilean Donan is a tidal island in Loch Duich, in the western Highlands. The castle, ruined in the Jacobite risings of the 18th century, was rebuilt in the early 20th century.

Draw the island, the main tower of the castle and the top of the bridge that connects the island to the mainland.

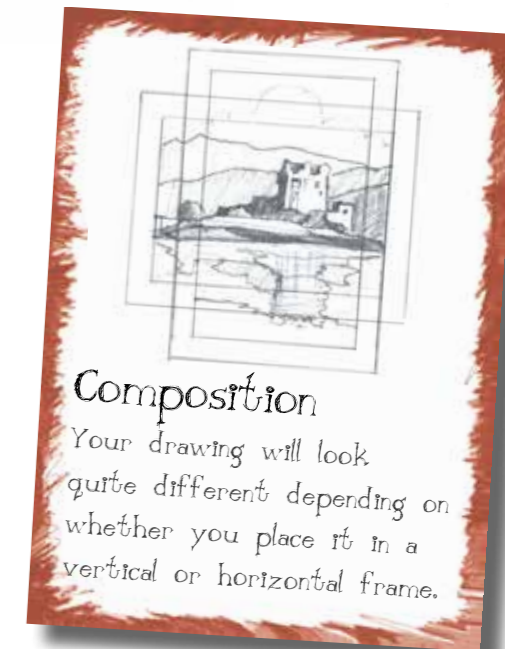


Add shapes to indicate the outlying buildings and the slope of the hill.



Add the arches of the bridge, the trees and the details of the castle.

Add the hills in the background.



## Composition

Your drawing will look quite different depending on whether you place it in a vertical or horizontal frame.

The light is coming from the right in this drawing, so the left-facing walls are in shadow.

